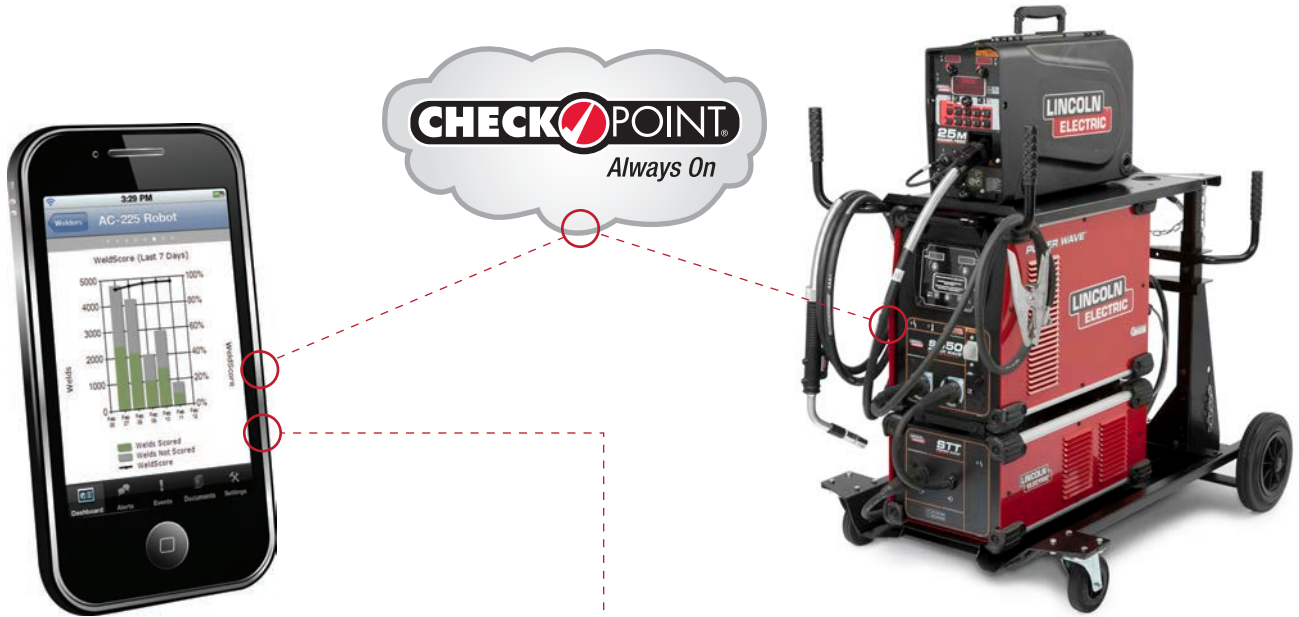


# CheckPoint™

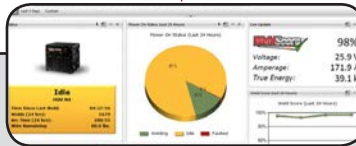
*Anywhere. Anytime. Any Device.*

Lincoln Electric's CheckPoint™ is the industry's only AlwaysOn™ worldwide production monitoring network, providing information at your fingertips wherever you are, without the need to install or maintain software or IT hardware. CheckPoint™ enables you to measure the Pulse™ of your Lincoln Electric welders with critical alerts and unprecedented production visibility. CheckPoint™ is viewable on your smart phone, tablet, laptop and desktop with all web browsers.



## Alerts

Receive email notifications based on equipment conditions and wire consumption to minimize downtime.



## Monitoring

View live status of each welder and weld details including: WeldScore™, voltage/current, True Energy™, arc time, deposition and more.



## Traceability

Document quality and satisfy reporting requirements by capturing audit trail data.

*AlwaysOn™ and Pulse™ are registered trademarks of I/Gear Online, LLC*



- No Software to Buy, Install or Upgrade with Standard Edition
- No IT Hardware
- Just Log In and Start Using It

## How Can CheckPoint™ Help My Business?

With all the costs associated with welding in manufacturing, how can you afford NOT to monitor welding data? If you have faced any of the issues below, you may be surprised to find out how monitoring your welding data can save you real dollars real fast.

Production & Manufacturing Issues	Cost	Checkpoint™ Can Help
<b>Quality</b>		
Analyzing Unknown Weld Defects	\$625.00	Reduce the time required to identify problems
Q.A. Hold to Verify Weld Acceptability	\$875.00	Reduce decision making time by identifying welding procedures used
Rework Costs	\$1,300.00	Identify which welds to rework, reducing total time required
ISO-Audit/Corrective Actions	\$3,375.00	Assist in reporting and record keeping
<b>Productivity</b>		
Variation in Part Cycle Times	\$1,250.00	Identify cycle time inconsistencies, providing management with the analysis tools to make changes
Over Welding	\$875.00	Closely track welding procedures and cycle times to help maintain the correct amount of weld metal per job
Uncoordinated Wire Package Changeovers	\$315.00	Assist with coordinating the right personnel to reduce change over times
Down Time Due to Gun Consumable Under-Utilization	\$95.00	Help management determine fluctuations in arc on time, and take corrective steps.
<b>Accountability</b>		
Operator Finger Pointing	\$625.00	The ability to monitor production data 24/7 provides accountability regarding part quality issues and simplifies the solution path
Arc-On-Time Discrepancies Between Shifts	\$625.00	Having actual arc on time for each operator during each shift can help identify inefficient use of time
<b>Weld System Management</b>		
Gas Consumption	\$460.00	Access to total arc on time can help you identify inconsistency between estimated & actual consumption.
Energy Costs	\$500.00	
Planning	\$315.00	Accurate cycle & arc on time data allows for the ability to better utilize equipment by making informed decisions
<b>Reporting</b>		
Welding Related Production Reporting	\$625.00	Accurate, formatted data streamlines reporting and helps drive weld quality improvements

\* Cost calculations are based on general estimates and may be higher or lower than actual costs associated with each item represented.  
 Formula used for above example = (5 People) x (1 Hour) x (5 Events) x (\$50.00/hr [Labor & Overhead]) + (Miscellaneous Costs)

## Should I consider a CheckPoint™ Premium Subscription?

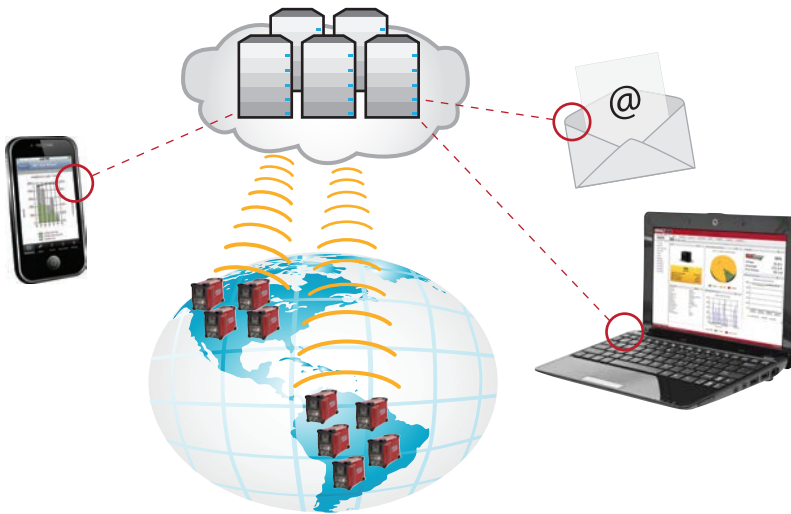
Let's compare the Standard Edition to the Premium Edition Plan:

Features	Standard	Premium
Mobile Ready, Global Data Access	✓	✓
Cloud Ready, Global Data Access	✓	✓
Email Notification System	✓	✓
Reporting	✓	✓
Manual Data Export	✓	✓
Document Library	✓	✓
Extended Document Library -Upload & Store up to 15 GB of Custom Documents & Files	X	✓
1 Year of Live Rolling Data Storage*	X	✓
Automated Data Archiving	X	✓
Share Data with Third Party Applications & Systems with ODATA API	X	✓

Contact your local Lincoln Electric sales representative for subscription pricing. \*The Standard Edition is limited to 30 days of rolling data storage.

## High Performance – Low Cost Approach

Lincoln Electric's CheckPoint™ eliminates the need for you to invest in expensive IT manpower and equipment. There is no need for you to purchase servers or software. All that is required to access valuable information from your welding equipment is a unique login and a secure password. Just log in and start using it. It is that simple.



You can immediately monitor each and every welder from wherever it is in the world. With CheckPoint™, administrative IT hassles to establish new hardware and software installations give way to a permanent connection where data continuously flows from your welder to a secure data center and then your smart phone, tablet, laptop or desktop.

## 24/7/365 Customer Care

As a subscriber to Lincoln Electric CheckPoint™, you will receive the welding industry's most advanced weld data collection and monitoring service designed to allow you to analyze and improve your welding operations. This will aid in your company's ISO, Six Sigma, statistical process control (SPC), quality cost delivery (CQD), overall effectiveness (OEE) and lean manufacturing efforts. All of this, at your fingertips, 24 hours, 7 days a week, 365 days a year.

*Contact us for information on Lincoln Electric CheckPoint™.  
Standard Edition is offered at no charge with equipment purchase.*

## Why Lincoln Electric CheckPoint™?

Your welding equipment never sleeps and neither does the CheckPoint™ data center.

### Easy to Use:

Just log in from anywhere and view welder status - anytime you want.

### Easy to Activate:

No IT investment required, just connect the welder and you are ready to go.

### Welding Consumable Traceability:

Made easy through direct links to our certificate center.

### No Software Hassles:

No software to buy, install or upgrade with the standard edition. Upgrades are automatic and instantaneous.

### Security You Can Bank on:

Your data is protected with physical security, encryption, user authentication and more.

### Data Aggregation:

With a global view of all of your welding equipment, you can benchmark your facilities.

### Exporting:

Export data and reports in various formats for offline analysis.

## CUSTOMER ASSISTANCE POLICY

The Lincoln Electric Company is manufacturing and selling high quality welding equipment, consumables, and cutting equipment. Our challenge is to meet the needs of our customers and to exceed their expectations. On occasion, purchasers may ask Lincoln Electric for information or advice about their use of our products. Our employees respond to inquiries to the best of their ability based on information provided to them by the customers and the knowledge they may have concerning the application. Our employees, however, are not in a position to verify the information provided or to evaluate the engineering requirements for the particular weldment. Accordingly, Lincoln Electric does not warrant or guarantee or assume any liability with respect to such information or advice. Moreover, the provision of such information or advice does not create, expand, or alter any warranty on our products. Any express or implied warranty that might arise from the information or advice, including any implied warranty of merchantability or any warranty of fitness for any customers' particular purpose is specifically disclaimed.

Lincoln Electric is a responsive manufacturer, but the selection and use of specific products sold by Lincoln Electric is solely within the control of, and remains the sole responsibility of the customer. Many variables beyond the control of Lincoln Electric affect the results obtained in applying these types of fabrication methods and service requirements.

Subject to Change – This information is accurate to the best of our knowledge at the time of printing. Please refer to [www.lincolnelectric.com](http://www.lincolnelectric.com) for any updated information.