

# U/LINC® CURRICULUM

## COURSE BUILDER



### LESSON PLANNING MADE EASY

Lesson planning can be a time consuming and difficult process, even for the most experienced welding instructor. In fact, in some states and industries, it's mandatory.

Course Builder makes the entire process of teaching welding quicker and easier. It's a lesson planning tool that helps you organize and deliver specific and appropriate U/LINC curriculum to your students and track the plan's compliance with state standards for welder training.

Select a timeframe from a week to a year, choose the U/LINC topics you need to address, and Course Builder builds a complete day by day U/LINC curriculum lesson plan. Then, use Course Builder to check which state standards your lesson plan will meet and where it falls short.

Take the hassle out of lesson planning and welding instruction. Construct a solid framework – for your students and yourself – with U/LINC Course Builder.

#### Processes »

SMAW, GTAW, GMAW, FCAW-G,  
FCAW-S, Robotic Automation and  
CNC Plasma Cutting

## LESSON PLANNING MADE EASY

- Organize a complete lesson plan with just a few keystrokes
- Easy and intuitive to use
- Aligned with AWS S.E.N.S.E. and NCCER
- References more than 5,000 state competencies from 42 states
- Lincoln Electric competencies can be used in states with no published state standards.

## FEATURES

### Chart Your Course

- Select a date range from one week to one year, classes per week, time per day
- Block out any dates for holidays, vacations, staff meetings or more
- Specify the U/LINC course modules and corresponding lessons you wish to include

### Instant Results

- Your custom calendar is automatically populated with appropriate lesson plans, lab activities and practice welds for each class session
- Print your course schedule
- Save your work where you left off

### Track Compliance

- Automatically conducts an instant and thorough Standards Audit
- Identifies state or national standards met by your proposed plan
- Detects standards not met by your plan
- Determines which U/LINC lessons will satisfy the missing standards

## COURSE BUILDER SPECIFICATIONS

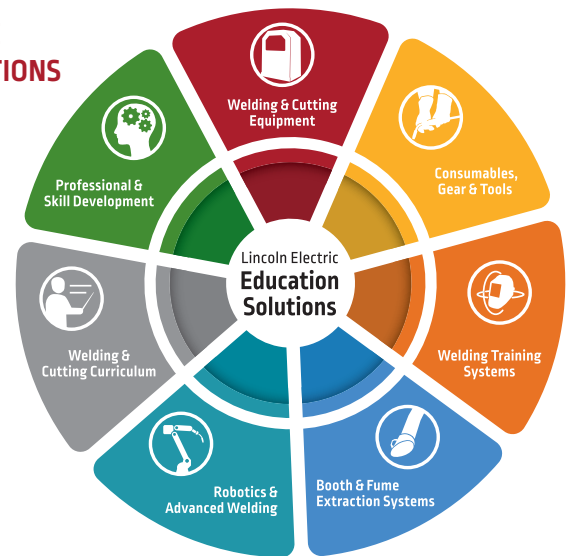
Number of U.S. States Addressed	42
Individual State Competencies Referenced	More than 5,000
Lincoln Electric Competencies (Compliance of all state standards intended for use by states that have no standards body.)	More than 500
Curriculum Crosswalked to these Standards	NCCER and AWS
U/LINC Curriculum Assets (Student activities, lesson plans, lab plans, handouts, assessments, videos, presentations)	More than 1,400

## COURSE BUILDER REQUIREMENTS

Browser	Common current browsers, including Internet Explorer®, Safari®, Firefox®, Chrome®
Java®	JavaScript® must be enabled

## LINCOLN ELECTRIC EDUCATION SOLUTIONS

**One Stop. One Partner.**  
Lincoln Electric offers a complete suite of products and services for the welding education community at every level.



## JOIN THE LINCOLN ELECTRIC EDUCATION COMMUNITY!

**First Pass™ Newsletter:** [www.lincolnelectric.com/firstpass](http://www.lincolnelectric.com/firstpass)

[twitter.com/LincolnElectric](https://twitter.com/LincolnElectric), [facebook.com/LincolnElectric](https://facebook.com/LincolnElectric)

Sign up to be a Lincoln Electric online customer at  
[www.lincolnelectric.com/education](http://www.lincolnelectric.com/education)

## SERVICE AND SUPPORT THAT YOU CAN COUNT ON

- » Contact us with comments or questions at [ulinc@lincolnelectric.com](mailto:ulinc@lincolnelectric.com)
- » U/LINC Help can be found at [www.ulinceducation.com](http://www.ulinceducation.com)
- » Contact Lincoln Electric Education Partners for pricing and sales
- » <http://www.ulinceducation.com/ulinc-contact.php>

**The Lincoln Electric Company**  
22801 St. Clair Avenue · Cleveland, OH · 44117-1199 · U.S.A.  
[www.lincolnelectric.com](http://www.lincolnelectric.com)