

# U/LINC<sup>®</sup> CURRICULUM

## BLUEPRINT READING



### A ROADMAP FOR SUCCESS

In the factory or on any jobsite, there's more to welding than just striking an arc. Like any builder, the successful welder will often be required to follow a detailed blueprint to guide him or her toward creating reliable, high quality welds.

Blueprint Reading is a comprehensive, multi-lesson U/LINC curriculum series aimed at understanding and working from a typical welding blueprint. Each lesson includes a lesson plan, student reference, presentation and quiz. Some lessons also include a lab activity to reinforce skills learned. All lessons include symbols and terminology pertaining to American and ISO standards, making them a valuable training resource for instructors and students anywhere in the world.

If your students are on their way to a career in welding, mastering blueprint reading as a skill will take them down that road more quickly – and position them for greater success in any welding career.

## BENEFITS

- Lessons help the student master these key blueprint reading skills
  - **Understand** the different scale types used on drawings
  - **Identify** the height, width and length dimensions used in drawings
  - **Interpret** the various weld symbols and notations used on drawings
  - **Draw** multiple-view sketches of simple objects that accurately show all relevant details
- Blueprint Reading expands the scope of U/LINC, making it your most comprehensive option for career tech welding and cutting curriculum
- Mastering blueprint reading enhances welding careers at any level, including fabricators, related trades, engineering technicians and engineers
- Modular curriculum map has a recommended lesson sequence or can be used in any order by instructors
- No prior blueprint reading experience is necessary

## FEATURES

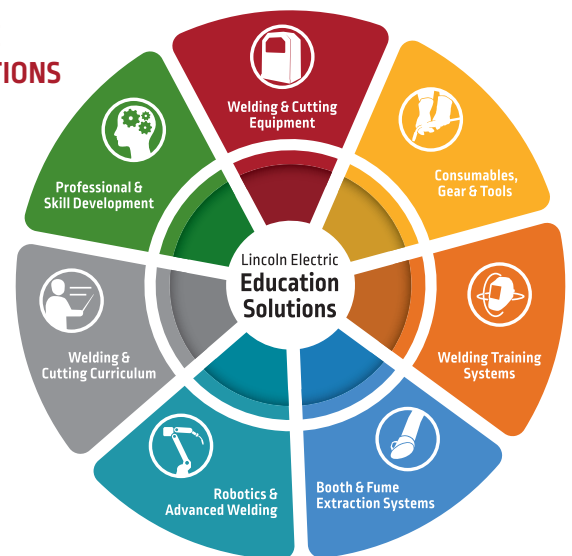
- More than 10 basic lessons included in U/LINC Level 2
- Level 3 features a growing number of advanced lessons
- Each Blueprint Reading lesson includes lesson plans, student reference, quiz and presentation
- Symbols and terms aligned with American and ISO standards
- AWS SENSE-aligned

## BLUEPRINT READING LESSONS

U/LINC Level 2 Blueprint Reading Lessons	U/LINC Level 3 Blueprint Reading Lessons
Line Interpretation and Basic Views	Additional Weld Symbols
Additional Views	<i>Coming Soon</i>
Sectioning	Metric System for Welders
Assembly Drawings	Dual Dimensioning
Dimensioning and Tolerancing	ISO Symbols for Welders
Additional Print Information	Geometric Dimensioning and Tolerancing
Structural Shapes	Welding Industry Fasteners
Basic Joints and Process Abbreviations	Estimating and Scheduling
Fillet Weld Symbols	
Groove Weld Symbols	
Pipe Welding Symbols	

## LINCOLN ELECTRIC EDUCATION SOLUTIONS

**One Stop. One Partner.**  
Lincoln Electric offers a complete suite of products and services for the welding education community at every level.



## JOIN THE LINCOLN ELECTRIC EDUCATION COMMUNITY!

**First Pass™ Newsletter:** [www.lincolnelectric.com/firstpass](http://www.lincolnelectric.com/firstpass)

[twitter.com/LincolnElectric](https://twitter.com/LincolnElectric), [facebook.com/LincolnElectric](https://facebook.com/LincolnElectric)

Sign up to be a Lincoln Electric online customer at

[www.lincolnelectric.com/education](http://www.lincolnelectric.com/education)

## SERVICE AND SUPPORT THAT YOU CAN COUNT ON

- » Contact us with comments or questions at [ulinc@lincolnelectric.com](mailto:ulinc@lincolnelectric.com)
- » U/LINC Help can be found at [www.ulinceducation.com](http://www.ulinceducation.com)
- » Contact Lincoln Electric Education Partners for pricing and sales
- » <http://www.ulinceducation.com/ulinc-contact.php>

**The Lincoln Electric Company**  
22801 St. Clair Avenue · Cleveland, OH · 44117-1199 · U.S.A.  
[www.lincolnelectric.com](http://www.lincolnelectric.com)