

EXTRA POWER, EXTRA PERFORMANCE

Ranger® 250 GXT



Shown:
Ranger® 250 GXT Red Paint (K2382-4) and
Ranger® 250 GXT Stainless (2382-5)

KEY FEATURES

The Ranger® 250 GXT has all the extras you need for construction and maintenance work. Versatile AC/DC welding output enables stick, TIG, MIG and flux-cored welding options. The 12-gallon fuel tank enables long stretches of operation without interrupting to refuel.

- Fully enclosed engine
- 11,000 Watts AC generator power
- Rugged and reliable

Processes »

Stick, TIG, MIG, Flux-Cored,
Gouging

Output »



Input »



Product Number »

K2382-4 Ranger® 250 GXT
Painted Case

K2382-5 Ranger® 250 GXT
Stainless Steel Case

FEATURES

» Totally Enclosed Case

- Engine is fully protected
- 3 service access doors
- Low Noise – 76.4 dBA sound level at 23 ft. (7 m). 100.7 dB sound power (Lwa) at rated output
- Choose from our painted or stainless roof, case sides and engine doors.

» Versatile AC/DC Welding

- AC/DC welding output for a broad range of stick electrode types
- Excellent AC TIG welding with optional TIG Module and either a foot or hand Amptrol™ for aluminum and other alloy welding
- MIG and flux-cored capable (with optional equipment)
- Remote ready! 6-pin connector and local/remote switch for remote control operation

» 11,000 Watts Peak Single-Phase AC Generator Power

- Peak for motor starting
- 10,000 watts continuous power for generator, plasma cutter or inverter welder
- Lights, grinder, power tools

» 23 HP Kohler® Gasoline Engine

- 2 cylinder, 4 cycle overhead valve air-cooled design
- Electric fuel pump avoids vapor lock
- Oil drain extension for easy oil changes
- 12 gallon tank for extended run times
- Electric fuel gauge located on control panel makes it easy to check the fuel level during operation and refueling

» Rugged Reliability

- Welding and AC Generator Outputs Rated at 104°F (40°C)

PERFORMANCE

Arc Performance

- XTRa Performance! Rated 250 amps/25 volts for AC, DC and CV. All rated outputs at 100% duty cycle 104°F (40°C).
- AC/DC welding output for a broad range of stick electrodes, such as Lincoln Excalibur® 7018 (AWS E7018) and Fleetweld® 5P+™ (AWS E6010). Also capable of MIG, flux-cored, and TIG welding.
- Choose DC(+) for a deep penetrating arc or DC(-) for less penetration on thin sheet metal. Select AC for general purpose welding and excellent aluminum TIG welding.



- Simple Output Range Selector can be used to select one of four amperage ranges with generous overlap for Stick/TIG welding, or two wire feed welding ranges.
- Fine adjustment control allows you to dial in just the right welding output for each application.
- Add productivity with self-shielded flux-cored CV wire welding. Compatible with Lincoln LN-25 PRO and Activ8® Across-the-Arc wire feeders for use with a variety of wire electrodes.
- Arc gouge with up to 3/16 in. (4.8 mm) carbon electrode.

AC Generator Performance

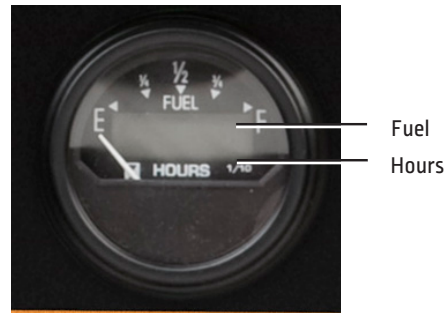
- XTRa Power! 11,000 watts peak AC generator power. Use peak power for motor starting.
- XTRa Power! 10,000 watts continuous AC generator power – Most continuous power in its class. Designed for high capacity needs such as a back-up generator, powering a plasma cutter or an Invertec® inverter welder. Use also for lights, a grinder or other power tools.
- Delivers up to 42 amps from the single 120V/240V full-KVA receptacle. Standard circuit breakers protect the machine as well as your power tools.
- Delivers up to 40 amps from two 120V duplex receptacles.
- Get two tools in one when you use the Ranger® 250 GXT as a power generator for emergency standby power, and/or for welding.
- Optional GFCI (Ground Fault Interrupter) Kit available for additional protection from electrical shock.
- Simultaneous welding and AC auxiliary power – power up to 5,100 watts while welding at 180 amps (AC auxiliary power is reduced when welding simultaneously per table below).

SIMULTANEOUS WELDING AND POWER LOADS

Welding Output (Amps)	Continuous Power (Watts)
0	10,000
80	8,700
130	7,200
180	5,100
250	0

FEATURES

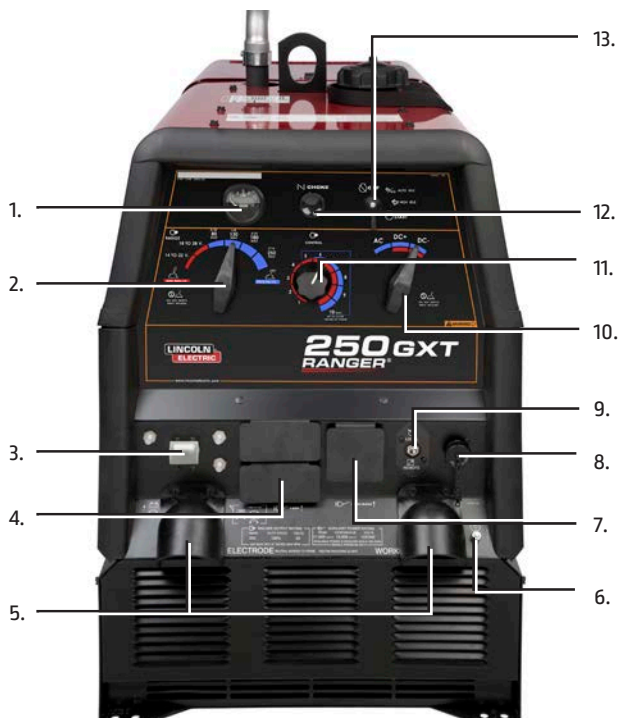
- XTRa Protection! Engine door provides machine protection and easy service access.
- Kohler® Command® 23 HP CH730 OHV Gasoline Engine.
- Noise at rated load:
 - 100.7 dB sound power (Lwa)
 - 76.4 dBA sound level at 23 ft. (7 m)
- Remote ready! 6-pin connector and local/remote switch for remote control operation. Also for AC/DC TIG Module use with foot or hand Amptrol™.



- Large top fuel filler neck is easily accessed for refueling.
- Electric Start Switch for easy starts. Switch combines OFF, START, and IDLER functions into one simple, compact, easy to use switch.
- Oil drain valve (no tools required) with removable extension tube.

- 12 gallon [45 Ltrs] fuel capacity allows you to run an extended day.
- Circuit breaker on the 12V battery circuit provides added component protection.
- Convenient truck or trailer mounting with front and rear holes in base.
- Electric fuel pump avoids vapor lock. Assures consistent fuel delivery in locations having a combination of high altitude, warm ambient temperatures, and high anti-pollution additives in gasoline.
- Combination electric fuel gauge and engine hour meter located on control panel. Easily check both fuel level and hour operation. Fuel gauge helps you virtually eliminate running low on fuel during critical jobs. Hour meter helps plan for scheduled engine maintenance.

KEY CONTROLS



1. Electric Fuel Gauge and Engine Hour Meter
2. 6-Position Output Range Selector
3. Circuit Breakers
4. 120 Volt AC Receptacles (NEMA 5-20R)
5. Output Stud Covers
6. Ground Stud
7. 120/240 Volt AC Full KVA Receptacle (NEMA 14-50R)
8. 6-Pin Remote Connector
9. Local/Remote Switch
10. Polarity Switch
11. Fine Output Control
12. Engine Choke Control (Stainless Steel Cable)
13. Engine Start Switch with Idler Control

QUALITY AND RELIABILITY

- Oil dip stick, filters, spark plugs, etc. are easily accessed with left, right and top engine doors. Left and right doors are removable for service.
- Adjust exhaust direction with top-mounted 360° rotatable exhaust muffler. Muffler made from aluminized steel for longer life.
- Red and black powder paint finish offers increased durability with added protection from rust and corrosion. Also ultraviolet resistant to better retain color and gloss.
- Factory option available with stainless steel roof, case sides and engine doors
- Longer engine life, reduced noise emissions and greater fuel economy with automatic engine idler.
- Conveniently located engine maintenance label under top engine door.
- Automatic engine shutdown protection for low oil pressure.
- Reliable start-up with Group 58 battery with 435 cold cranking amps.
- Easy access battery cover.



- Dependability and longer life aided by all-copper windings in rotor and stator with high quality insulation.
- Approved by Canadian Standards Association (CSA).
- Manufactured under a quality system certified to ISO 9001 requirements.
- Three-year Lincoln Electric warranty (parts and labor) on welder (engine is warranted separately by the manufacturer).
- Backed by Lincoln's Service Parts Commitment – We will ship in-stock parts within 24 hours of receipt of the order to anywhere within the U.S.

MACHINE SPECIFICATIONS

Product Name	Ordering Information	Description	CC Rated Output Current/Voltage/ Duty Cycle	CV-Rated Output Current/Voltage/ Duty Cycle	Generator AC Power (2)(3)	Dimensions H x W x L inches (mm)	Weight lbs. (kg)
Ranger® 250 GXT	K2382-4 Painted Roof, Case Sides and Engine Doors	250 Amp AC/DC Arc Welder 11,000 Watts Peak	AC Constant Current 250A/25V/100% DC Constant Current 250A/25V/100%	DC Constant Voltage (1) 250A/25V/100% 14-22V 18-28V	11,000 Watts Peak 10,000 Watts Continuous 60 Hz Single Phase Two 120V Duplex Receptacles 20A per Duplex 40A Total (4) 120V/240V Receptacle 42A Each 120V Branch (4) 42A @ 240V	29.9 x 21.5 x 42.3 (759 x 546 x 1073) To top of exhaust tube: 36.2 (920)	602 (273)
	K2382-5 Stainless Steel Roof, Case Sides, and Engine Doors	10,000 Watts Continuous AC Power	Current Ranges 160-250A 110-180A 70-130A 50-80A Max OCV @ 3700 RPM 80V RMS				

(1) DC constant voltage capability provides convenience and added safety when welding in electrically hazardous conditions.

(2) When welding, available auxiliary power will be reduced. Output voltage is within +/- 10% at all loads up to rated capacity.

(3) 120V will operate either 60 Hz or 50/60 Hz power tools, lights, etc.

(4) Circuits cannot be wired in parallel to operate the same device.

ENGINE SPECIFICATIONS

Engine Model	Description	Horsepower & Displacement	Ignition	Capacities	Operating Speeds	Fuel Consumption
Kohler® OHV (3) Command® CH730 (Gasoline)	2 Cylinder, 4 Cycle, OHV Air-Cooled Gasoline Engine Aluminum Alloy with Cast Iron Liners Electric Fuel Pump	23 HP @ 3600 RPM 44 cu in (725 cc)	Electric Start 12V Battery 435 Cold Cranking Amps Manual Choke	FUEL: 12 Gals (45 Ltrs.) OIL: 2.0 Qts (1.9 Ltrs)	Full Load 250A DC 3,500 RPM High Idle 3,700 RPM Low Idle 2,400 RPM	1.7 Gals/Hr 6.6 Ltr/Hr. 0.9 Gals/Hr 3.5 Ltr/Hr 0.4 Gals/Hr 1.5 Ltr/Hr

(3) Kohler® warranty is 3 years.

RECOMMENDED ACCESSORIES



GENERAL OPTIONS

Kohler Tune-Up Kit
For routine engine maintenance. Includes (2) spark plugs, (1) fuel filter, (1) air filter, (1) oil filter, (2) 1 Qt. 10W 30 Oil.
Order K3494-1



Power Plug Kit (20 amp)
Provides four 120V plugs rated at 20 amps each, and one dual voltage, full KVA plug rated at 120/240V, 50 amps. 120V plug may not be compatible with common household receptacles.
Order K802N



Full-KVA Power Plug
One dual voltage plug rated at 120/240V, 50 amps.
[NEMA 14-50P]
Order T12153-9



Full-KVA Adapter Kit
Provides convenient connection of Lincoln Electric equipment having a 240V AC 1-phase plug [NEMA 6-50P] to the full-KVA receptacle on engine-driven welders.
Order K1816-1



GFCI Receptacle Kit
Includes one UL approved 120V ground fault circuit interrupter duplex type receptacle and installation instructions. Replaces the factory-installed 120V duplex receptacle. Each receptacle of the GFCI duplex is rated at 20 amps. Maximum total current from the GFCI duplex is limited to 20 amps. Two kits required for all 120V receptacles on Ranger® and Commander® products.
Order K1690-1



Spark Arrestor Kit
Attaches to muffler exhaust tube. Virtually eliminates spark emissions.
Order K1898-1



Canvas Cover
To protect the engine drive when not in use. Made from attractive red canvas material that is flame retardant, mildew resistant and water repellent.
Order K886-2



All-Terrain Undercarriage
For moving by hand. Overall width 27 in. (0.7 m). Includes heavy-duty puncture-resistant (inner tube and sealant) tires.
Order K1737-1



Factory Undercarriage
For moving by hand on smooth surface floors. Heavy-duty, puncture-resistant (inner tube and sealant) tires and front caster. Convenient steering handle.
Order K1770-1



Welding Gas Cylinder/LPG Tank Holder
Holds welding gas cylinder or LPG tank (for products with LPG engine). For LPG: Use one holder for LPG tank and a second holder for welding gas cylinder. Both holders will attach to the K1770-1 undercarriage.
Order K1745-1



Shown with optional K2639-1 Fender & Light Kit

Small Two Wheel Welder Trailer
For heavy-duty road, off-road, plant and yard use. Includes pivoting jack stand, safety chains, and 13 in. (330 mm) wheels. Stiff .120 in. (3.0 mm) welded rectangular steel tube frame construction is phosphate etched and powder coat painted for superior rust and corrosion resistance. Low sway suspension gives outstanding stability with manageable tongue weight. Wheel bearings are packed with high viscosity, high pressure, low washout Lubriplate™ grease. Includes a Duo-Hitch®, a 2 in. (51 mm) ball/lunette eye combination hitch. Overall width 60 in. (1524 mm) Overall length 110 in. (2794 mm).
Order:
K2635-1 Trailer
K2639-1 Fender & Light Kit
K2640-1 Cable Rack



STICK OPTIONS

Accessory Kit
For stick welding. Includes 35 ft. (10.7 m) #2/0 electrode cable with lug, 30 ft. (9.1 m) #2/0 work cable with lugs, headshield, filter plate, work clamp and electrode holder. 400 amp capacity.
Order K704



Accessory Kit
For stick welding. Includes 20 ft. (6.1 m) #6 electrode cable with lug, 15 ft. (4.6 m) #6 work cable with lugs, headshield, filter plate, work clamp, electrode holder and sample pack of mild steel electrode. 150 amp capacity.
Order K875



Remote Control Kit
Consists of a control box with choice of two cable lengths. Permits remote adjustment of output.
Order K857 for 25 ft. (7.6 m)
Order K857-1 for 100 ft. (30.5 m)



TIG OPTIONS

Pro-Torch™ PTA-26 TIG Torch
Air-cooled 200 amp torch (2 piece separate power conductor and a braided gas hose).
Order K1783-4



Magnum® Parts Kit for PTA-26V
Provides all the torch accessories you need to start welding. Parts kit provides collets, collet bodies, a back cap, alumina nozzles and tungstens in a variety of sizes, all packaged in an easy to carry reclosable pack.
Order KP509



TIG Module
Portable, high frequency unit with gas valve for TIG welding. Rated at 300 amps/60% duty cycle.
Order K930-2



Control Cable
Connects TIG Module to power source. Comes with 9-pin TIG Module connector and power source 6-pin connector and 120V plug.
Order K936-3



Control Cable Extension
Allows the TIG Module to be operated at distances up to 200 ft. (61 m) from the power source. Available in 45 ft. (13.7 m) sections.
Order K937-45



Hand Ampctrl™
Provides 25 ft. (7.6 m) of remote current control for TIG welding. (6 pin plug connection). Velcro straps secure torch.
Order K963-3 (one size fits all Pro-Torch™ TIG torches)



Foot Ampctrl™
Varies current while welding for making critical TIG welds and crater filling. Depress pedal to increase current. Depressing pedal fully achieves maximum set current. Fully raising the pedal finishes the weld and starts the afterflow cycle on systems so equipped. Includes 25 ft. (7.6 m) control cable.
Order K870



Contactor Kit
Installs in the K930-2 TIG Module for use with welders without a contactor. Makes the TIG torch electrode electrically "cold" until the Ampctrl™ is activated.
Order K938-1



Docking Kit
Secures TIG Module to top of flat-roofed power source.
Order K939-1

RECOMMENDED ACCESSORIES

WIRE FEEDER OPTIONS

LN-25X / Magnum[®] PRO Curve[™] 045C One-Pak[®]

Includes: LN-25X Feeder with CrossLinc[®] Technology (K4267-1); Magnum[®] PRO Curve[™] welding gun Ready-Pak[®] 15 ft. (4.6 m) (K2951-2-10-45); Drive Roll Kit .040-.045 in. (1.0-1.2 mm) Cored Wire (KP1697-045C)
Order K4100-1



LN-25X / K126[™] PRO 1/16-5/64C One-Pak[®]

Includes: LN-25X Wire Feeder with CrossLinc[®] Technology (K4267-1); K126[™] PRO Innershield[®] 350A FCAW-SS Welding Gun 15 ft. (4.6 m) 1/16-5/64 (K126-12); Drive Roll Kit 5/64 in. (2.0mm) Solid/Cored Wire (KP1697-5/64); Drive Roll Kit 1/16 in. (1.6mm) Cored Wire (KP1697-1/16C)
Order K4100-2



POWER MIG[®] 180C

Premium compact wire welder with continuous voltage control for MIG and flux-cored welding. 30 to 180 amp output range. Get input power from the AC generator of the engine-driven welder with the K1816-1 Full-KVA Adapter Kit (required).
Order K2473-2



PLASMA CUTTING

Tomahawk[®] 1000

Cuts metal using the AC generator power from the engine-driven welder. Requires the T12153-9 Full-KVA Power Plug (1-Phase).
Order K2808-1

PRODUCT SPECIFICATIONS

Product Name	Product Number	Rated Output Current/Voltage/Duty Cycle	Output Range	Engine	Number of Cylinders	HP@ Speed (rpm)	H x W x D in (mm)	Net Weight lb (kg)
Ranger [®] 250 GXT	K2382-4 Painted Roof, Case Sides and Engine Door K2382-5 Stainless Steel Roof, Case Sides, and Engine Doors	250A AC/DC CC/25V/100% 250A DC CV/25V/100%	50-250A AC/DC 14-28V CV 11,000 watts peak 10,000 watts continuous	Kohler [®] OHV Command [®] CH730	2	23 @ 3600	29.9 x 21.5 x 42.3 (759 x 546 x 1074) To top of exhaust tube: 36.2 (920)	602 (273)

For best welding results with Lincoln Electric equipment, always use Lincoln Electric consumables. Visit www.lincolnelectric.com for more details.

Manufactured at a facility with certified ISO Quality and Environmental Management Systems.

All trademarks and registered trademarks are the property of their respective owners

CUSTOMER ASSISTANCE POLICY

The business of The Lincoln Electric Company is manufacturing and selling high quality welding equipment, consumables, and cutting equipment. Our challenge is to meet the needs of our customers and to exceed their expectations. On occasion, purchasers may ask Lincoln Electric for information or advice about their use of our products. Our employees respond to inquiries to the best of their ability based on information provided to them by the customers and the knowledge they may have concerning the application. Our employees, however, are not in a position to verify the information provided or to evaluate the engineering requirements for the particular weldment. Accordingly, Lincoln Electric does not warrant or guarantee or assume any liability with respect to such information or advice. Moreover, the provision of such information or advice does not create, expand, or alter any warranty on our products. Any express or implied warranty that might arise from the information or advice, including any implied warranty of merchantability or any warranty of fitness for any customers' particular purpose is specifically disclaimed.

Lincoln Electric is a responsive manufacturer, but the selection and use of specific products sold by Lincoln Electric is solely within the control of, and remains the sole responsibility of the customer. Many variables beyond the control of Lincoln Electric affect the results obtained in applying these types of fabrication methods and service requirements.

Subject to Change – This information is accurate to the best of our knowledge at the time of printing. Please refer to www.lincolnelectric.com for any updated information.



The Lincoln Electric Company
22801 St. Clair Avenue · Cleveland, OH · 44117-1199 · U.S.A.

www.lincolnelectric.com