

# GENUINE FILTER REPLACEMENT

**STEP 1** Select your machine

**STEP 2** Identify the filter indicator location and the filter status

**STEP 3** Select the appropriate Genuine Filter Replacement

 <p><b>MINIFLEX®</b> Portable Welding Fume Extractor K3972-3 K2497-18</p>	Top Control Panel	Activated Carbon Filter (optional) [KP2389-1]	LongLife-H Filter [KP2390-1]	Pre-Filter [KP2390-3]	HEPA Filter [KP2390-4]	Filter One-Pak® [KP2390-5]
	Indicator blinks					

 <p><b>MOBIFLEX®</b> 200-M Welding Fume Extraction K1653-4 K1653-5 K2497-12</p>	Front Control Panel	MERV 14 Filter [KP1673-1]	MERV 16 (HE, Nano) Filter [KP1673-9]	Activated Carbon Filter (optional and fits over main filter) [KP1852-1]	Pre-Filter [KP1673-5]
	Gauge is red while unit is in operation				

 <p><b>MOBIFLEX®</b> 400-MS Welding Fume Extraction K1741-3 K1741-4 K2497-14</p>	Front Control Panel	MERV 14 Filter [KP1673-2]	MERV 16 (HE, Nano) Filter [KP1673-10]	Pre-Filter [KP1673-6]
	Unable to obtain pressure below 1500 Pa after several cleaning attempts Indicator blinks			

 <p><b>STATIFLEX®</b> 200-M Weld Fume Extraction Base Unit K1654-4 K1654-5 K1654-6</p>	Front Control Panel	MERV 14 Filter [KP1673-1]	MERV 16 (HE, Nano) Filter [KP1673-9]	Activated Carbon Filter (optional and fits over main filter) [KP1852-1]	Pre-Filter [KP1673-5]
	Gauge is red while unit is in operation				

 <p><b>STATIFLEX®</b> 400-MS Weld Fume Extraction Base Unit K1742-1 K1742-2</p>	Front Control Panel	MERV 14 Filter [KP1673-2]	MERV 16 (HE, Nano) Filter [KP1673-10]	Pre-Filter [KP1673-6]
	Unable to obtain pressure below 1500 Pa after several cleaning attempts Indicator blinks			

Order replacement filters at [weldfumefilters.com](http://weldfumefilters.com)



**STATIFLEX® 800**  
Weld Fume Extraction Base Unit

K3680-1  
K3680-2  
K3681-1  
K3681-2

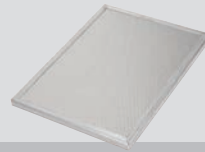
Unable to obtain pressure below 1700 Pa after several cleaning attempts

Indicator light on front panel.

MERV 16 [HE] Filter - Set of 2 [KP2752-16]



Pre-Filter [KP1673-6]

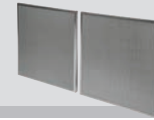


**DOWNFLEX® 100-NF**  
Weld Fume Downdraft Table

K2751-9

Suction performance is lower than normal

Spark Arrestor - Set of 2 (optional) [KP2752-12]



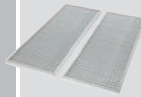
**DOWNFLEX® 200-M**  
Weld Fume Downdraft Table

K2751-10  
K2751-13  
K2751-14

Differential pressure exceeds 1700 Pa

Gauge points to red

Pre-Spark Arrestor - Set of 2 [KP4052-1]



Spark Arrestor - Set of 2 [KP2752-12]



MERV 16 [HE] Filter - Set of 2 [KP2752-16]



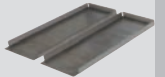
Discharge Filter [KP3551-1]



HEPA Filter<sup>(1)</sup> [KP2752-14]



Plasma Cutting Prefilter<sup>(2)</sup> - Set of 2 [KP2752-17]



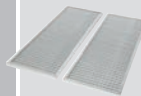
**DOWNFLEX® 400-MS/A**  
Weld Fume Downdraft Table

K2751-11  
K2751-15  
K2751-16

Unable to obtain pressure below 1700 Pa after 5 cleaning attempts

Gauge points to red and alarm buzzer sounds

Pre-Spark Arrestor - Set of 2 [KP4052-1]



Spark Arrestor - Set of 2 [KP2752-12]



MERV 16 [HE] Filter - Set of 2 [KP2752-16]



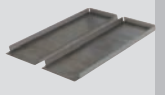
Discharge Filter [KP3551-1]



HEPA Filter<sup>(1)</sup> [KP2752-14]



Plasma Cutting Prefilter<sup>(2)</sup> - Set of 2 [KP2752-17]



**CIRCULATOR® OR STATIFLEX® 6000-MS**  
Central System

Unable to obtain a pressure below 8 in WG or 2000 Pa after several cleaning attempts

Indicator blinks and alarm buzzer sounds

MERV 14 Filter - Set of 2 [KP3367-1]



MERV 16 [HE] Filter - Set of 2 [KP3368-1]



**STATIFLEX® FILTER BANK OR STATIFLEX® COMPLETE**  
Central System

Unable to obtain a pressure below 1700 Pa after several cleaning attempts

Indicator light on cleaning control box

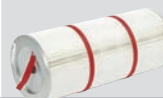
MERV 11 Filter [KP3370-1]



MERV 16 [HE], Nano Filter [KP3370-2]



MERV 16 [PTFE] Filter [KP3370-3]



Order replacement filters at [weldfumefilters.com](http://weldfumefilters.com)

<sup>(1)</sup> For DownFlex tables equipped with optional HEPA Filter Kit [K2752-1]

<sup>(2)</sup> For DownFlex tables equipped with optional Plasma Cutting Grid [K2752-2]



**PRISM™**  
Central System

Unable to obtain pressure below 1700 Pa after several cleaning attempts.

Indicator light on control panel.

MERV 11 Filter [KP4519-1]



MERV 16 [HE], Nano Filter [KP4519-2]



MERV 16 [PTFE] Filter [KP4519-3]

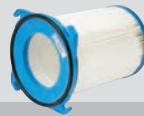


**X-TRACTOR®**  
1GC  
Portable Welding Fume Extractor Unit  
K652-1  
K652-2

Replace after several cleaning cycles (cleaning device is manually operated)

Suction performance is lower than normal

Filter [KP2069-1]

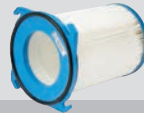


**X-TRACTOR®**  
3A  
Weld Fume Extractor  
K3965-1  
K3965-2

Replace after several cleaning cycles

Suction performance is lower than normal

Filter [KP2069-1]



**X-TRACTOR®**  
5A  
Weld Fume Extractor  
K3966-1  
K3966-2

Replace after several cleaning cycles

Suction performance is lower than normal

Filter [KP2061-1]



**X-TRACTOR®**  
8A  
Weld Fume Extractor  
K3967-1  
K3967-2

Replace after several cleaning cycles

Suction performance is lower than normal

Filter [KP3984-1]



Order replacement filters at [weldfumefilters.com](http://weldfumefilters.com)

The operation of welding fume control equipment is affected by various factors including proper use and positioning of the equipment, maintenance of the equipment and the specific welding procedure and application involved. Worker exposure level should be checked upon installation and periodically thereafter to be certain it is within applicable OSHA PEL and ACGIH TLV limits.

**CUSTOMER ASSISTANCE POLICY**

The business of The Lincoln Electric Company® is manufacturing and selling high quality welding equipment, consumables, and cutting equipment. Our challenge is to meet the needs of our customers and to exceed their expectations. On occasion, purchasers may ask Lincoln Electric for information or advice about their use of our products. Our employees respond to inquiries to the best of their ability based on information provided to them by the customers and the knowledge they may have concerning the application. Our employees, however, are not in a position to verify the information provided or to evaluate the engineering requirements for the particular weldment. Accordingly, Lincoln Electric does not warrant or guarantee or assume any liability with respect to such information or advice. Moreover, the provision of such information or advice does not create, expand, or alter any warranty on our products. Any express or implied warranty that might arise from the information or advice, including any implied warranty of merchantability or any warranty of fitness for any customers' particular purpose is specifically disclaimed.

Lincoln Electric is a responsive manufacturer, but the selection and use of specific products sold by Lincoln Electric is solely within the control of, and remains the sole responsibility of the customer. Many variables beyond the control of Lincoln Electric affect the results obtained in applying these types of fabrication methods and service requirements.

Subject to Change – This information is accurate to the best of our knowledge at the time of printing. Please refer to [www.lincolnelectric.com](http://www.lincolnelectric.com) for any updated information.

**The Lincoln Electric Company**  
22801 St. Clair Avenue · Cleveland, OH · 44117-1199 · U.S.A.

[www.lincolnelectric.com](http://www.lincolnelectric.com)